



New Jersey Crossing Guard Training Program 2022



RUTGERS

Edward J. Bloustein School
of Planning and Public Policy



2022 Program Summary

Over the past decade, the New Jersey Safe Routes Resource Center at the Alan M. Voorhees Transportation Center (VTC) at Rutgers University has been conducting research on crossing guard training and developing and implementing a statewide uniform, comprehensive Crossing Guard Training Program. With funding from New Jersey Department of Transportation, New Jersey Division of Highway Traffic Safety, and Municipal Excess Liability Joint Insurance Fund of New Jersey (NJMEL), VTC continues to train and provide resources to crossing guards and their supervisors.

New Jersey has approximately 6,800 crossing guards. The training program has reached 79 percent of the New Jersey municipalities that employ school crossing guards.

- In 2022, two trainings were held as webinars due to COVID-19 restrictions and to accommodate more registrations than are typical for classroom training. The trainings were attended by 173 individuals representing 109 municipalities. Other attendees included a representative of Burlington County Sheriff's Office.
- Since being made available on YouTube in 2015, the training video "Crosswalk Heroes" has had over 70,000 views. The Spanish language version of the training video has had over 2,400 views on YouTube.

- The Challenging Crossings training video has had over 6,700 views since it was introduced in 2019.
- The 2016 Crossing Guard Placement video has had 1,500 views. Placement, and the decommissioning of crossing guard posts, continue to be important issues for officers.

The crossing guard supervisor train-the-trainer program continues to be rated "good" or "excellent" by the participants. Departments that have had supervisors attend the program in previous years send their new crossing guard supervisors to the training. Often, departments send several officers to the training.

Crossing guard supervisors are using the training presentation and video to train their guards, and are using other resources such as the model policy, the post observation report form, and the medical examination form.

The following document reviews results of the crossing guard supervisor pre-and post-training questionnaires and the pre- and post-training quizzes taken by the supervisors. Lessons learned, resources, and next steps are summarized.

2 Supervisor Training Sessions:

| | Registered | Attended | Communities Represented |
|------------------------|------------|------------|-------------------------|
| June 23, 2022 webinar | 78 | 63 | 45 |
| August 3, 2022 webinar | 130 | 110 | 64 |
| TOTAL: | 208 | 173 | 109 |

- An officer attended from 13 towns that had not previously sent officers
- Departments that have previously sent supervisors have sent additional attendees or new supervisors
- Other attendees included:
 - A representatives of Burlington County Sheriff's Office
- On July 28th, NJMEL JIF/J.A. Montgomery emailed the training flyer to communities throughout New Jersey. This effort resulted in approximately 70 additional supervisors registering for the August 3rd class.

Supervisor Training Agenda

I. Crossing Regulations and Procedures

- a. Introduction
- b. Characteristics of Young Children
- c. Traffic Laws and Regulations
- d. Crossing Procedures
- e. Types of Intersections

II. Field Exercise

III. Crossing Guard Policies and Procedures

- a. Crossing Guard Placement
- b. Hiring, Training & Retraining
- c. Hazards and Incidents
- d. Orientation to Agency

IV. Presentation of Training Material



The Training

The following slides present a summary of the responses from the crossing guard training questionnaires completed at the two train-the-trainer classes held in June and August, 2022.



Summary Report

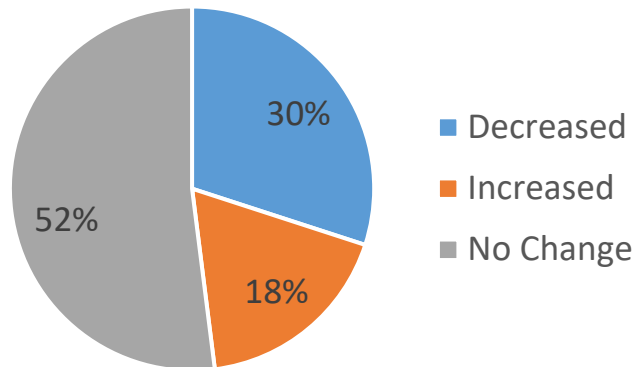
Crossing Guard Supervisor Pre-Training Questionnaire

Staffing

Question 1: How many crossing guards does your municipality currently employ? How many crossing guards do you believe are needed?

- 81 participants responded
- 46% report that they have *too few* crossing guards
- 54% report that they have *enough* crossing guards or *more than enough*, which usually refers to the presence of substitute guards

Question 2: Have there been increases or decreases in your municipal crossing guard force in the past 3 years?



- New Jersey has over 6,800 crossing guards.
- Almost one-third of departments saw a decrease in their force.

Policies

Question 3: Do you have official written municipal policy(s) regarding crossing guards about any of the following?

| Policy Type | Responses (82) | Percentage |
|---|----------------|------------|
| Duties | 58 | 71% |
| Training | 58 | 71% |
| Hiring | 50 | 61% |
| Ability to meet physical demands (eye sight, hearing, etc.) | 40 | 49% |
| Placement | 39 | 48% |
| Discipline | 38 | 46% |
| Retraining | 33 | 40% |
| None of the above | 11 | 13% |

- Departments most often have policies relating to duties, training, and hiring, but fewer have policies related to retraining, placement, discipline, and medical requirements for the job.
- Our model municipal crossing guard policy is available on the NJ Crossing Guard webpage.

Crossing Guard Placement

Question 4: In your municipality, what is the most important factor determining the placement of crossing guards?

| Factors | Responses (84) | Percentage |
|---------------------------|----------------|------------|
| Proximity to school(s) | 59 | 70% |
| Traffic volume | 57 | 68% |
| Age of students | 39 | 46% |
| Traffic Study | 18 | 21% |
| Pedestrian crashes | 16 | 19% |
| Speed Limit | 13 | 15% |
| Vehicle turning movements | 8 | 10% |
| Road width | 5 | 6% |
| Other | 5 | 6% |
| Engineer study | 4 | 5% |
| Number of lanes | 4 | 5% |

- Main determinants for crossing guard placement are: proximity to school, age of students, and traffic volume
- Responses for other:
 - Intersections
 - Students walking to school
 - Student traffic

Crossing Guard Placement

Signalized intersections?

| Answer | Response | Percentage |
|--------------|-----------|-------------|
| Yes | 64 | 76% |
| No | 20 | 24% |
| Total | 84 | 100% |

A significant number of crossing guard posts are located at challenging intersections.

Signalized multi-lane intersections?

| Answer | Response | Percentage |
|--------------|-----------|-------------|
| Yes | 42 | 50% |
| No | 42 | 50% |
| Total | 84 | 100% |

Unsignalized multi-lane intersections?

| Answer | Response | Percentage |
|--------------|-----------|-------------|
| Yes | 43 | 51% |
| No | 41 | 49% |
| Total | 84 | 100% |



Crossing Guard Placement

Question 5: Are crossing guards placed for:

| School Type | Responses (84) | Percentage |
|-------------------------|----------------|------------|
| Public school students | 84 | 100% |
| Private school students | 29 | 35% |
| Charter school students | 12 | 14% |
| Other types of students | 3 | 4% |

- All crossing guards are placed to help public school students.
- 35 percent of municipalities report providing crossing guards for private school students.
- Crossing guard placement should be based on safety needs at particular locations.



Crossing Guard Placement

Question 6: Do you provide crossing guards for:

- Most crossing guards are crossing elementary and middle school students, but over half are crossing high school students.
- Over half cross pre-k students, most likely accompanied by a parent.

| Event Type | Responses (84) | Percentage |
|------------------------------------|----------------|------------|
| Elementary school students | 80 | 95% |
| Middle school students | 70 | 83% |
| High school students | 45 | 54% |
| Pre-kindergarten students | 38 | 45% |
| Community events | 23 | 27% |
| Other types of schools or students | 2 | 2% |

Other types of schools or students:

Camp, Senior Citizen Lectures

Training

- Almost two-thirds of new crossing guards receive two or more hours of classroom instruction as required by law.
- In general, returning guards receive less classroom training.

The train-the-trainer class encourages supervisors to bring all the crossing guards together for classroom training. Guards can discuss their experiences at their posts, learn new procedures and be reminded of required procedures.

Question 7: How many hours of classroom training do your **new** crossing guards receive annually?

| Hours | Response | Percentage |
|-----------------|-----------|-------------|
| Zero | 5 | 6% |
| Up to ½ hour | 0 | 0% |
| Up to one hour | 2 | 3% |
| Up to 2 hours | 25 | 31% |
| 2 hours or more | 48 | 60% |
| Total | 80 | 100% |

Question 8: How many hours of classroom training do your **returning** crossing guards receive annually?

| Hours | Response | Percentage |
|-----------------|-----------|-------------|
| Zero | 14 | 17% |
| Up to ½ hour | 2 | 2% |
| Up to one hour | 9 | 11% |
| Up to 2 hours | 29 | 36% |
| 2 hours or more | 27 | 33% |
| Total | 81 | 100% |

Training

Question 9: What classroom training materials do you use?

Respondents selected multiple answers.

79% of the municipalities are using materials from the NJ Crossing Guard Training Program.

| Training Materials | Responses (80) | Percentage |
|---|----------------|------------|
| NJ Crossing Guard Training Program material | 63 | 79% |
| AAA | 21 | 26% |
| NJMEL (Municipal Excess Liability Joint Insurance Fund) | 19 | 24% |
| Materials developed in-house | 13 | 16% |
| None of the above | 5 | 6% |
| Other | 4 | 5% |

Training

Question 10: How many hours of field training do your **new** crossing guards receive?

| Hours | Response | Percentage |
|------------------|-----------|-------------|
| Zero | 3 | 4% |
| Up to one hour | 12 | 15% |
| Up to 10 hours | 24 | 30% |
| Up to 20 hours | 21 | 26% |
| 20 hours or more | 20 | 25% |
| Total | 80 | 100% |

Question 11: How many hours of field training do your **returning** crossing guards receive?

| Hours | Response | Percentage |
|------------------|-----------|-------------|
| Zero | 45 | 56% |
| Up to one hour | 22 | 28% |
| Up to 10 hours | 11 | 14% |
| Up to 20 hours | 1 | 1% |
| 20 hours or more | 1 | 1% |
| Total | 80 | 100% |

Only one-quarter of departments provide the required 20 hours of field training for new guards, and 3 respondents noted that their new guards do not receive field training. Training varies widely by department.

Training

Question 12: How do you conduct field training?

| Answer | Responses (79) | Percentage |
|---|----------------|------------|
| New guards are paired with an experienced guard at one post | 35 | 44% |
| New guards are paired with several experienced guards at multiple posts | 32 | 41% |
| Crossing guard supervisor monitors new crossing guards while in cruiser | 22 | 28% |
| Crossing guard supervisor is paired with new crossing guard at post | 22 | 28% |
| Other | 10 | 13% |
| Field training is not conducted | 3 | 4% |

Some respondents chose multiple answers.

The majority of new crossing guards are paired with an experienced guard or guards for their required field training.

Training

Question 13: How often are crossing guards retrained in your municipality?

| Answer | Response (79) | Percentage |
|--|---------------|------------|
| Annually | 50 | 63% |
| Other | 13 | 16% |
| Retraining is not offered | 11 | 14% |
| Only when laws or existing conditions change | 6 | 8% |
| Several times per year | 1 | 1% |
| Every other year | 1 | 1% |

Other: If an issue arises; Every 2 years.

- The majority of municipalities are retraining annually.
- Retraining refreshes crossing guards on:
 - Proper crossing procedures
 - Post routines
 - Counters the establishment of bad habits
- Gives guards the opportunity to talk about experiences on the post.

Training

Question 14: Who directs the training of your crossing guards?

| Director | Response | Percentage |
|---|-----------|-------------|
| Municipal Police | 72 | 89% |
| Other | 7 | 9% |
| Senior-level or experienced crossing guard(s) | 6 | 7% |
| Other municipal employee(s) | 2 | 2% |
| Private company | 1 | 1% |
| State Police | 0 | 0% |
| Total | 81 | 100% |

The vast majority of crossing guards are trained by municipal police departments.

Question 15: Is your department engaged in any form of countywide or regional crossing guard training?

| Answer | Response | Percentage |
|--------------|-----------|-------------|
| No | 70 | 84% |
| Yes | 13 | 16% |
| Total | 83 | 100% |

Some of the departments engage in countywide/regional training.

Note: Several county police academies provide direct training for crossing guards.

Orientation to Agency

Question 16: Are your crossing guards employed by:

| Answer | Response (83) | Percentage |
|-----------------|---------------|------------|
| Municipality | 82 | 99% |
| School district | 2 | 2% |
| Private company | 2 | 2% |
| Other | 0 | 0% |

- Most crossing guards are hired, trained and supervised by the municipal police. Each year, a few departments inquire about privatizing the crossing guard function.

Question 17: During what hours are your crossing guards stationed?:

| Answer | Response (79) | Percentage |
|-----------------|---------------|------------|
| Morning hours | 79 | 100% |
| Afternoon hours | 77 | 97% |
| Lunch hours | 22 | 28% |

- All municipalities station their crossing guards during morning and afternoon hours.
- Over one-quarter of municipalities report stationing crossing guards during lunch hours.

Orientation to Agency

Question 18: What is the starting hourly rate for a new crossing guard in your municipality?

| Answer | Response | Percentage |
|-------------------|-----------|-------------|
| \$7.25 – \$10.00 | 2 | 3% |
| \$10.01 – \$12.00 | 4 | 5% |
| \$12.01 – \$14.00 | 9 | 11% |
| \$14.01 – \$18.00 | 28 | 35% |
| \$18.01 – \$20.00 | 13 | 16% |
| More than \$20.00 | 23 | 29% |
| Total | 79 | 100% |

Question 19: What is the highest hourly rate paid to crossing guards in your municipality?

| Answer | Response | Percentage |
|-------------------|-----------|-------------|
| \$7.25 – \$10.00 | 0 | 0% |
| \$10.01 – \$12.00 | 4 | 5% |
| \$12.01 – \$14.00 | 4 | 5% |
| \$14.01 – \$18.00 | 18 | 23% |
| \$18.01 – \$20.00 | 20 | 26% |
| More than \$20.00 | 32 | 41% |
| Total | 78 | 100% |

- In general, it appears that crossing guard pay has increased over the past several years. This change may reflect the increase in the NJ minimum wage, and/or the need to attract applicants.

Orientation to Agency

Question 20: Are crossing guards in your municipality members of a union?



| Answer | Response | Percentage |
|--------------|-----------|-------------|
| No | 59 | 71% |
| Yes | 19 | 23% |
| Don't Know | 5 | 6% |
| Total | 83 | 100% |

- Almost one-quarter of municipalities have crossing guards who are members of a union.
- Unions may provide uniforms for their members.

Orientation to Agency

Question 21: Does your municipality provide uniforms, other than the safety vest, for your crossing guards?



| Answer | Response | Percentage |
|--|-----------|-------------|
| Yes, we provide uniforms | 37 | 45% |
| No | 29 | 35% |
| Yes, we provide a stipend for the purchase of uniforms | 9 | 11% |
| Other, please explain: | 8 | 10% |
| Total | 83 | 100% |

What is offered varies by municipality.

Other

Vest and rain jackets; all but pants and shoes

Orientation to Agency

Question 22: If your municipality provides uniforms or a stipend, what is required?

| Answer | Responses (66) | Percentage |
|-----------------|----------------|------------|
| Safety Vest | 62 | 94% |
| Rain gear | 54 | 82% |
| Hats | 36 | 55% |
| Shirt | 33 | 50% |
| Gloves | 33 | 50% |
| Visible ID card | 27 | 41% |
| Pants | 24 | 36% |
| Badges | 17 | 26% |
| Shoes | 17 | 26% |
| Other | 8 | 12% |

| |
|--------------|
| Other |
| Jacket |
| Stop Sign |
| Winter Coat |



Uniforms assist in making crossing guards more visible, and more comfortable on the post. The safety vest is required.

Orientation to Agency

Question 23: What equipment does your municipality provide to crossing guards?

- The STOP paddle is required equipment for crossing guards.
- Whistle use has increased among municipalities.
- Some departments provide orange cones to improve visibility at the crossings.

| Answer | Responses (81) | Percentage |
|--------------------------|----------------|------------|
| Hand-held STOP paddle | 80 | 99% |
| Whistle | 32 | 40% |
| Orange cones | 18 | 22% |
| Movable safety signs | 7 | 9% |
| Other | 7 | 9% |
| Pole-mounted STOP paddle | 2 | 2% |
| Ice melt | 2 | 2% |
| Chair | 1 | 1% |
| Shovel | 1 | 1% |



Orientation to Agency

- Most departments have crossing guards report directly to their supervising officer.
- In some departments, they are reporting to more than one person.
- Crossing guards need clear procedures for reporting incidents, hazards, or maintenance issues at their posts.

- The training emphasizes that maintenance of crosswalks and crossing post areas is a matter of *workplace safety*.
- Coordination with the municipal DPW may allow for prioritization of crossing guard posts for shoveling, sanding, pothole repair, etc.
- Coordination with the county or the state to address conditions on county or state roads can be challenging.

Question 24: To whom do crossing guards report incidents, hazards, or violations?

| Answer | Responses (83) | Percentage |
|-------------------|----------------|------------|
| Police supervisor | 72 | 87% |
| Dispatch | 31 | 37% |
| Other | 12 | 14% |
| School staff | 3 | 4% |
| Public works | 1 | 1% |

Other

Crossing Guard Supervisor

Private Contractor Supervisor

Traffic Bureau

Orientation to Agency

Question 25: To whom do crossing guards convey job-related suggestions, comments, concerns, or complaints?

| Answer | Responses (83) | Percentage |
|-----------------|----------------|------------|
| Police | 77 | 93% |
| Other | 9 | 11% |
| Municipality | 6 | 7% |
| School district | 3 | 4% |
| Private company | 1 | 1% |

| |
|---------------------------|
| Other |
| Crossing Guard Supervisor |
| Traffic Bureau |

Question 26: What is the typical tenure of crossing guards in your municipality?

| Years | Response | Percentage |
|------------------|-----------|-------------|
| Less than 1 year | 2 | 3% |
| 1 to 2 years | 3 | 4% |
| 2 to 5 years | 9 | 11% |
| 5 to 10 years | 39 | 49% |
| 10 to 15 years | 14 | 18% |
| 15 to 20 years | 9 | 11% |
| 20 or more years | 3 | 4% |
| Total | 79 | 100% |

Orientation to Agency

Question 27: Does your department perform initial medical exams?

| Answer | Response | Percentage |
|--------------|-----------|-------------|
| Yes | 54 | 68% |
| No | 26 | 32% |
| Total | 80 | 100% |

Question 28: Does your department perform regular age-based medical exams?

| Answer | Response | Percentage |
|--------------|-----------|-------------|
| No | 51 | 65% |
| Yes | 28 | 35% |
| Total | 79 | 100% |

Question 29: Have any of your guards suffered injuries on the job?

| Answer | Response | Percentage |
|--------------|-----------|-------------|
| No | 43 | 53% |
| Yes | 38 | 47% |
| Total | 81 | 100% |

Summary Report

Crossing Guard Supervisor Post-Training Questionnaire

Orientation to Agency

- 61 training participants responded to the post training survey.
- Not every person answered every question.

- 65% of training participants considered themselves only *somewhat* or *not at all* familiar with the material presented.
- This reinforces the assumption that development and distribution of this training will benefit crossing guards.

Question 1: How familiar were you with the information presented before this training?

| Answer | Response | Percentage |
|--------------|-----------|-------------|
| Not at all | 2 | 3% |
| Somewhat | 38 | 62% |
| Very much | 21 | 35% |
| Total | 61 | 100% |

Question 2: How would you rate the training overall, i.e. did it accomplish what you expected and needed?

| Answer | Response | Percentage |
|--------------|-----------|-------------|
| Excellent | 45 | 74% |
| Good | 15 | 25% |
| Fair | 1 | 1% |
| Poor | 0 | 0% |
| Total | 61 | 100% |

Training Materials

Question 3: How well did the training meet the following goals?

(ranked from 1 (low) to 5 (high))

| Answer | 1 | 2 | 3 | 4 | 5 | Total responses |
|---|---|---|---|----|----|-----------------|
| Provided a structure that is easily adopted for training crossing guards. | 0 | 0 | 0 | 12 | 59 | 61 |
| Provided information relevant to conditions in your community | 0 | 0 | 3 | 12 | 46 | 61 |
| Provided resources to improve crossing guard performance. | 0 | 0 | 0 | 11 | 50 | 61 |



Training Materials

Question 4: Which of the following resources presented today will you use for your own training program?

| Resources | Will Use | Will Not Use | Will Discuss with Supervisor | Total Responses |
|--|----------|--------------|------------------------------|-----------------|
| PowerPoint Training Slides for Crossing Guards | 47 | 1 | 13 | 61 |
| Field Exercise for Crossing Guards | 38 | 2 | 20 | 60 |
| Crossing Guard Tip Sheets | 44 | 1 | 16 | 61 |
| Crossing Guard Post Observation Report | 43 | 1 | 17 | 61 |
| Municipal Crossing Guard Policies | 36 | 2 | 23 | 61 |
| PowerPoint Segments | 44 | 2 | 15 | 61 |
| Training Video | 50 | 3 | 7 | 60 |
| Training Video - Spanish | 17 | 23 | 16 | 56 |

Most of the participants will either use the training resources or they will discuss using the materials with their supervisor.

Training Session

Question 5: Are there any barriers to implementing any part of this training?

| Answer | Response | Percentage |
|--------------|-----------|-------------|
| No | 59 | 97% |
| Yes | 2 | 3% |
| Total | 61 | 100% |

Question 6: Would you have spent more time on any of these modules?

| Answer | Response | Percentage |
|--------------|-----------|-------------|
| No | 59 | 97% |
| Yes | 2 | 3% |
| Total | 61 | 100% |

On which modules would you have spent more time?

Legality of guards directing traffic. It's a frequent problem.

Question 7: Would you extend your classroom crossing guard training past the two-hour time requirement?

| Answer | Response | Percentage |
|--------------|-----------|-------------|
| No | 54 | 89% |
| Yes | 7 | 11% |
| Total | 61 | 100% |

Would you extend your classroom crossing guard training?

Possibly, if while conducting the training, it seems necessary based on the reaction of those taking the class.

On a case by case basis as needed

Dependent on each guard as needed

If needed

Training Session

Question 8: Please share any other thoughts on the Crossing Guard Training Program:

Program was well thought out and covered all information needed.

Great training opportunity with a lot of useful information.

Great class!

Very well put together!

Very well put together, educational and informative. Job well done. Thank You

Good course for new supervisors

Outstanding and very informative

It was a great training program!

Training was great. Title 39 Laws for Pedestrians and Motor Vehicles was very useful.

Very informative.

This is a useful tool/resource for municipalities that utilize school crossing guards.

Training Course had many useful strategies and a strong powerpoint presentation.

Overall great program with many resources

I loved the fact that your program solicited feedback from crossing guards which provided realistic issues relating to how crossing guards feel about their responsibilities and work dynamics.

A lot of the information was repetitive. Useful information but definitely felt repetitive

Excellent class

I have used this training to train our guards last few years. It has been very helpful.

Overall, it was very thorough and insightful.

The training session was very helpful

Good program. Thanks.

I thought it was a well delivered program.

I thought the course thoroughly covered the training program and was very well designed.

It was a great program. I feel prepared to present the training to our guards before this year's school year.

Crossing Guard Quiz

| Results | Pre-training | Post-training |
|----------------------------------|--------------|---------------|
| Average Score | 78.5% | 86.0% |
| Number of “Don’t Know” Responses | 61 | 4 |

- June 22, 2022 class responded 100% correctly on two questions on the pre-training quiz and four questions on the post-training quiz
- August 3, 2022 class responded 100% correctly on one question on the pre-training quiz and four questions on the post-training quiz
- Scores stayed the same or improved on all questions
- Scores improved dramatically on questions addressing modes of communication with pedestrians and with drivers

Crossing Guard Quiz

As has been the case in previous years, the percentage of correct answers for the two questions below increased from pre- to post-training, but remained the most confusing to participants:

- A crossing guard should use only words, and a head nod, to communicate with pedestrians. (correct answer: true)
- Crossing guards use only the STOP paddle and an outstretched hand to communicate with drivers. (correct answer: true)



Direct Crossing Guard Training in Underserved Communities

Direct Crossing Guard Training

In-person crossing guard training was conducted in:

- Paterson – July 20, 2022, 72 guards
- Trenton – August 15, 2022, 30 guards
- City of Passaic – September 1, 2022, 55 guards

These cities were chosen from the list of municipalities identified by the following:

- *NJ 2020 Strategic Highway Safety Plan_Equity Approach and Parameters*
- Rankings of communities in 2021 NJDHTS Highway Safety Plan for pedestrian crashes and bicycle crashes
- Equity analysis maps and lists to identify underserved communities
 - US EPA Environmental Justice Screening and Mapping Tool
 - NJ Department of Community Affairs Targeted Urban Municipalities designation
 - NJ Department of Environmental Protection Overburdened Communities list

In City of Passaic, almost all the guards speak Spanish as their first language. The Rutgers-VTC representative presented the material and the crossing guard supervisors translated as needed. The Spanish voiceover version of the Crosswalk Heroes video was shown in Passaic and Paterson.

Lessons Learned


Lessons Learned - Webinar Training

- Webinar trainings began in 2020 with increased attendance over the prior year. The 2021 trainings had typical attendance. The 2022 trainings saw increased attendance and attendance by 13 municipalities that had not participated before.
- On July 28th, NJMEL JIF/J.A. Montgomery emailed the training flyer to communities throughout New Jersey. This effort resulted in approximately 70 officers registering for the August 3rd class.
- Online training remains effective for increasing registration, but it is difficult to monitor engagement in an online format.


Crossing Guard Training the Trainer #2 (8.13.2020) Zoom Recording

Why We Need Crossing Guards

Children are encouraged to walk and bike to school, but their limitations expose them to risks.



Catherine Bull
Program Coordinator
NJ Crossing Guard Training & Resources



Lessons Learned – Crossing Guard Tenure

- More communities are having trouble finding people who want to be crossing guards or who qualify to be crossing guards.
- Police Departments are exploring privatizing the hiring/ training/ supervision of crossing guards.
- Police Departments are requesting information on crossing guard post placement and decommissioning posts.

| Training Year | 2-10 years | 10-15 years | 15-20 years |
|---------------|------------|-------------|-------------|
| 2014 | 43 % | 20% | 32% |
| 2015 | 49% | 28% | 19% |
| 2016 | 68% | 19% | 10% |
| 2017 | 71% | 6% | 20% |
| 2018 | 73% | 11% | 13% |
| 2019 | 64% | 15% | 18% |
| 2020 | 72% | 17% | 11% |
| 2021 | 64% | 21% | 6% |
| 2022 | 63% | 21% | 6% |

Lessons Learned – Communication

Comments from crossing guards during direct training included:

- Parents, older students, middle school students, teachers and school bus drivers do not pay attention to the instructions of the crossing guard.
- Individuals cross by themselves and randomly. This a frustrating experience for the crossing guards and can increase hazards in the school zone.

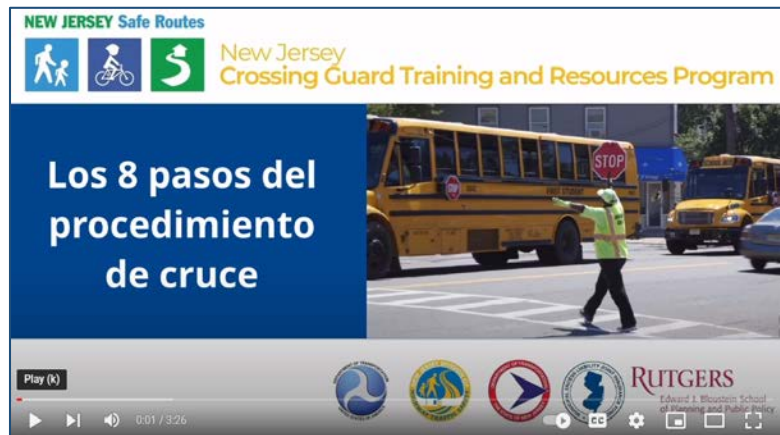
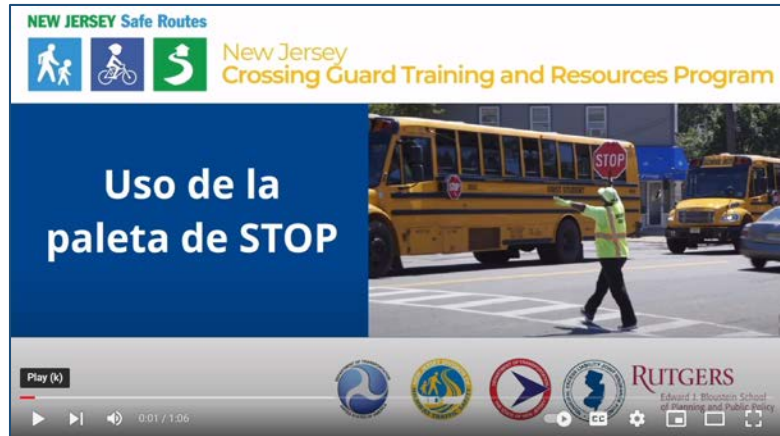
A way to get the word out is needed.

- Communication to parents and teachers through the school
- Communication through the transportation office to the drivers of the school buses

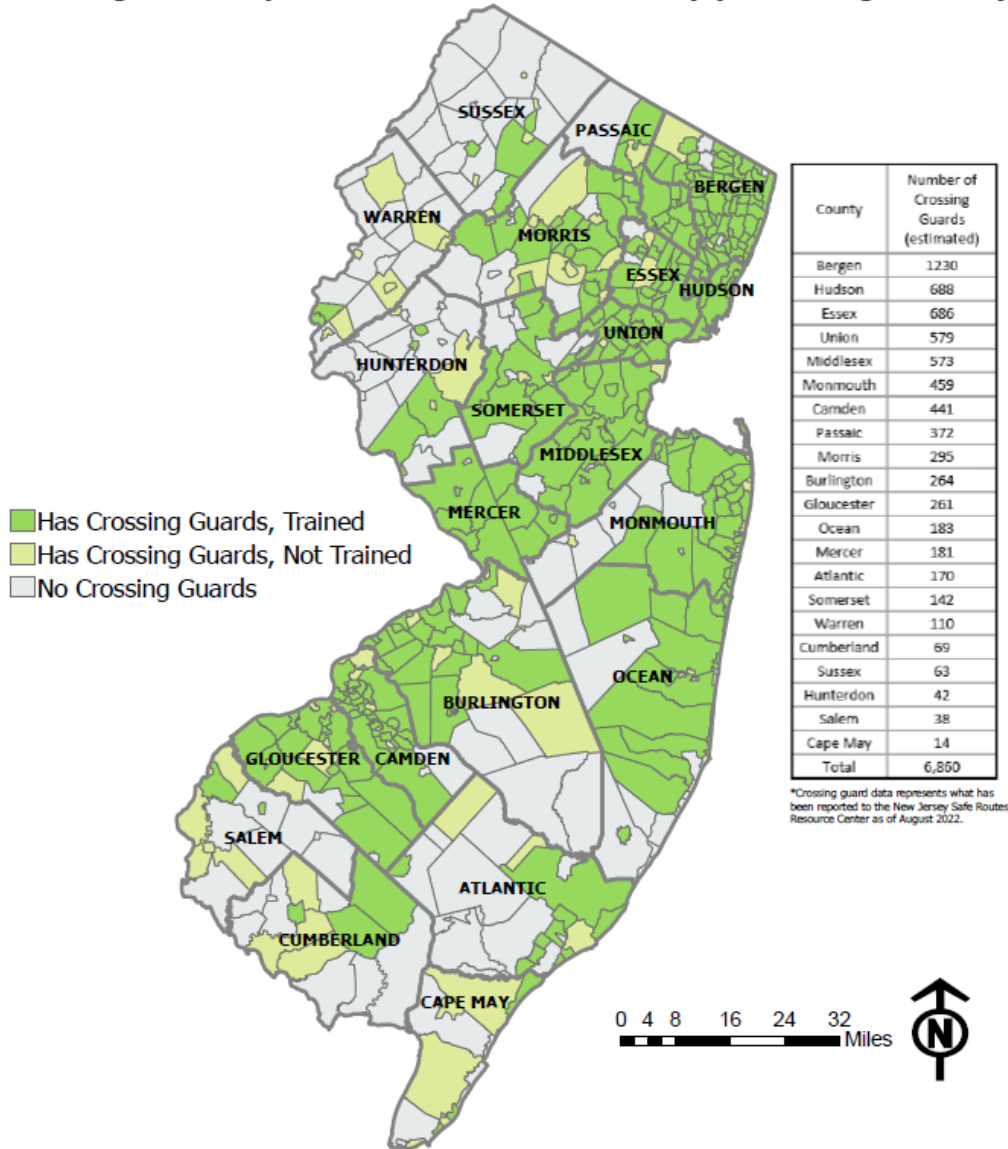


Lessons Learned– Spanish-language Resources

- For several years, more than one-third of police departments noted that they will use the Spanish language voice-over version of the crossing guard training video, and others will talk to their supervisor about using this resource.
- Rutgers-VTC provided Spanish versions of *Use of the STOP Paddle*, and *8 Steps of the Crossing Procedure* videos
- More Spanish-language resources may be needed.



Crossing Guard Supervisors Trained in New Jersey (2013 - August 2022)



Over the 10 years that the NJ Crossing Guard Train-the-Trainer course has been offered, supervisors from 332 municipalities have been trained. The training has reached 79% of the municipalities that have crossing guards.

Over the years, municipalities have sent multiple officers to the training, as well as new supervisors as they take on the supervisory role.

Thank You!

Our Partners

- NJ Department of Transportation
- NJ Division of Highway Traffic Safety
- Federal Highway Administration
- NJ MEL
- AAA
- NJ Department of Health, Division of Occupational Safety & Health (OSHA)
- HTSPAC
- NJPTOA
- County and regional police academies

